

FISCAL YEAR 15-16

# 16

---

# IMPACT

A PROFOUND IMPACT LEAVES AN  
EVERLASTING LEGACY

---

## VISION

A planned gift from alumnus Rick Brown  
will benefit future Embry-Riddle entrepreneurs

ANNUAL REPORT ON PHILANTHROPY



# CONTENTS

# Features

## VISION

# 16

A planned gift from pilot and businessman Frederick 'Rick' Brown ('67, Flight Training, '72, DB) honors the entrepreneurial spirit that mentor Jack Hunt once sparked in him

# 02

## LEGACY

Celebrating the history of philanthropy at Embry-Riddle

# 20

## DISTINCTION

Rockwell Collins elevates Embry-Riddle to Tier One designation

# 10

## DEDICATION

Veteran Geoffrey Mandell focuses on future, thanks to The Boeing Company

# 22

## ACTION

Student body builds scholarship fund to help future students succeed

# 12

## PASSION

Universal Helicopters and Robinson Helicopter unite around STEM Education Center

# 24

## CONNECTION

Crowdfunding connects students and donors through philanthropy

# 14

## DEVOTION

The Mark E. Lemmer Memorial Scholarship ensures the late pilot's joy of flying lives on

Below: Grandchildren of Mark E. Lemmer celebrate his life with a special sendoff.

## Departments

- 01 INTERIM PRESIDENT'S MESSAGE
- 06 REPORT ON PHILANTHROPY
- 08 LIFETIME & LEGACY DONORS
- 26 SENIOR EXECUTIVE DIRECTOR'S MESSAGE
- 27 BOARD OF TRUSTEES

On the cover: Embry-Riddle alumnus Frederick 'Rick' Brown ('67, Flight Training, '72, DB); Photo by Brian Tietz

## INTERIM PRESIDENT'S MESSAGE

*The most important message I can convey is simply, thank you.*



Thank you for being part of Embry-Riddle and for keeping Embry-Riddle in your thoughts and plans to help us grow, advance and continue our quest for excellence in all that we do.

I would also like to thank you, especially, for helping the students who chose this university to prepare for their futures. Whatever area our students choose—research, flight, engineering, business or even future medical school—we offer programs to match their ambitions and goals. In fact, more than 95 percent of our students enter the field or program of their choice within a year after graduation.

That is simply an extraordinary statistic when compared to the national average, and our donors help fuel that record of success. This year, donors like The Boeing Company, Rockwell Collins, the Lemmer family and our very own Daytona Beach Campus graduating classes are helping students achieve their goals by investing in scholarships and the unique student-based projects for which we have become so well known.

Our Embry-Riddle family and friends are also helping us fund new buildings and equipment, such as the STEM Education Center at the Prescott Campus, and the John Mica Engineering and Aerospace Innovation Complex (MicaPlex) at the Embry-Riddle Research Park in Daytona Beach. Universal Helicopter Inc. and Robinson Helicopter Company are the latest donors to support our landmark project in Prescott, Ariz. (see article and list on page 10), and Rick and Jan Brown have made a planned gift to support the College of Business' new Entrepreneurship Center to be housed in the MicaPlex when it opens next spring. There are still many naming opportunities for labs, conference rooms and individual offices in both of these extraordinary facilities. Your investment is critical as we transform to a research university ... and be assured that as we become the university we want to be, we will not lose sight of who we are and our commitment to providing a first-rate student experience.

We are grateful for the support that allows our undergraduate students to play an important role in some of the most creative, inventive, innovative and competitively successful research projects in the nation. Imagine, one such student co-authored a paper, which was nominated for a Nobel Prize! Students like these come to Embry-Riddle to express a passion that influenced them to choose our university, and they live this passion every day they are on campus.

Thank you for expressing *your* passion for Embry-Riddle. Your support makes a difference in who we are and what we can become.

Go Eagles!

Sincerely yours,

**Karen A. Holbrook, Ph.D.**  
Interim President



A Storybook Moment Photography



# LEGACY

## **It all began with a single gift in 1966.**

From the moment Walter and Helene Booth made the first recorded contribution to what was then Embry-Riddle Aeronautical Institute, they set in motion a wave of generosity that has rippled through the years, growing and ever expanding to help shape the university as we know it today.

Over the years, countless individuals have invested in the Embry-Riddle promise—a promise that started in the minds of founders John Paul Riddle and T. Higbee Embry in 1926 and grew Embry-Riddle from a small flight training facility and aircraft sales company to a globally renowned, fully accredited aviation and aerospace university.

It's this promise that continues to ignite students and faculty working side by side in our laboratories, classrooms, cockpits and hangars—and every semester that promise renews when hundreds of recent graduates complete their programs and go out into the world to make a difference.

This is the impact at the heart of every gift made to Embry-Riddle, whether

it's dedicated to scholarships, facilities and equipment, technology, faculty development or student programs.

Giving matters. It's made a difference to Embry-Riddle as an institution of higher learning since 1959, when it officially became a nonprofit organization. And it's often made the difference between a student closing the door on their dreams, or opening that door wide and boldly stepping through to their next great achievement.

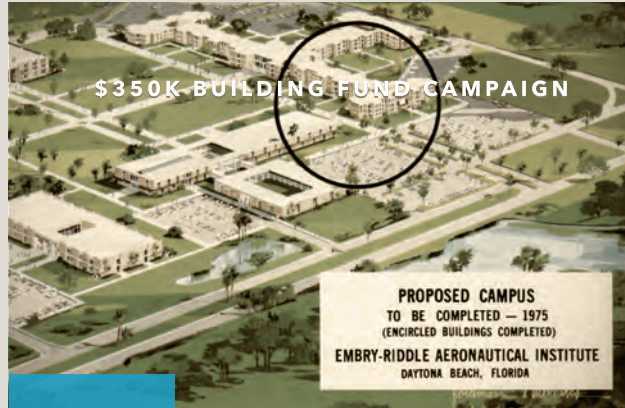
In honor of Embry-Riddle's 90th anniversary (1926-2016), this report celebrates the history of philanthropy at our institution—and the people, businesses and organizations who started and continue the ripple effect of giving, growth and achievement at Embry-Riddle.

Embry-Riddle's flight line in 1966.



# LEGACY

HIGH POINTS IN THE HISTORY OF PHILANTHROPY AT EMBRY-RIDDLE



1966

The first official fundraising campaign is launched by university President Jack Hunt following his announcement of a **10-year program** to accommodate 6,000 students at the Daytona Beach Campus. The **\$350,000 building fund campaign** was volunteer-led by John C. “Jay” Adams Jr. (HonDoc '08).

MARCH 30

First recorded individual contribution: **Walter and Helene Booth** of Ormond Beach, Fla.

1967

JANUARY 1

The first gift from a sitting member of then Embry-Riddle Aeronautical Institute Board of Trustees, **Philip H. Elliott Jr.** (HonDoc '04; '72, Flight Training, DB), is received. He and his wife, Joyce, later establish the Philip H. Elliott Scholarship. Elliott served as a member of the board of trustees (1965-2004), trustee emeritus (2004-present), and as an attorney for Embry-Riddle (1965-1998).

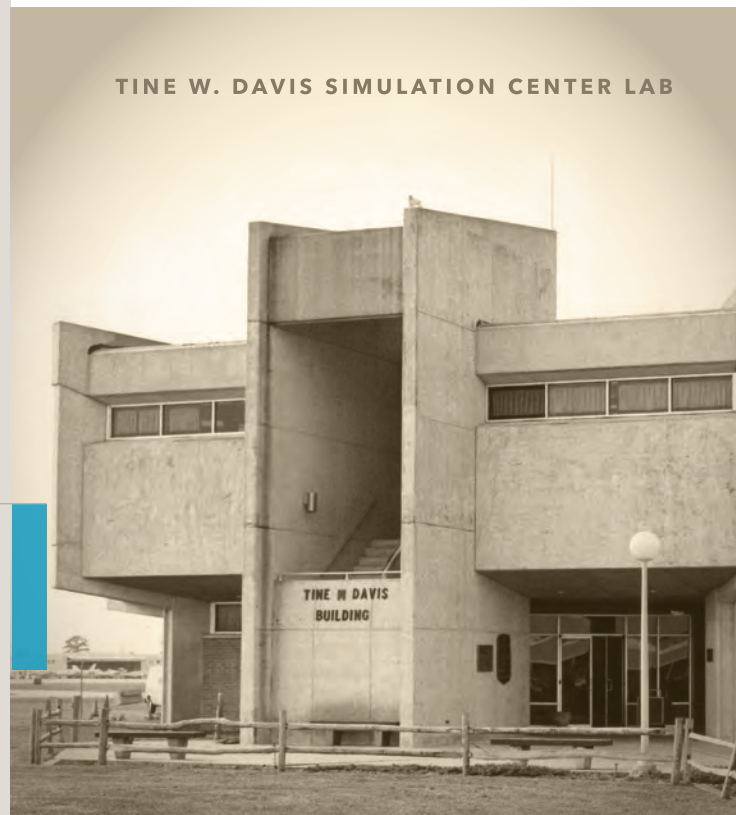
The first recorded corporate gift: **Daytona Beach Jaycees**.

The longest and most consistent annual donors, **John C. “Jay” Adams Jr.** (HonDoc '08) and **Leila Adams**, make their first gift. Since 1969, Trustee Emeritus Jay Adams and his wife, Leila, have made an annual gift to Embry-Riddle. Adams was an active member of the Embry-Riddle Board (1967-2009).

1971

MAY

The **Tine W. Davis Simulation Center Laboratory**, later known as the Tine W. Davis Building (flight operations) is dedicated at the Gill Robb Wilson Flight Center at the Daytona Beach Campus. It is the first of four university facilities ultimately named for Davis, in recognition of his contributions.



1974  
1980  
1981

DECEMBER 28

**Samuel Goldman** (HonDoc '08, awarded postmortem) becomes the first donor to surpass \$1 million in total giving. In 1977, the **Samuel Goldman Maintenance Technology Center** at the Daytona Beach Campus is named in his honor.

The first major contribution to the Prescott Campus is made by **Dr. W. David Rummel**, who served on the Embry-Riddle Board of Trustees (1979-1981). The board later names **Rummel Road** on the Prescott Campus in his honor.

SUMMER

The first recorded Daytona Beach Campus class gift is received. The graduating class of the summer semester raises money to purchase a **clock** for the **John Paul Riddle Student Center's exterior tower**.

The most consistent and largest donor to the Prescott Campus, Trustee Emeritus **S. Harry Robertson** (HonDoc '72), makes his first contribution. Four Prescott Campus facilities bear his name. Robertson is also a loyal contributor to Daytona Beach and Worldwide campus programs and scholarships, and he served as an active member of the board of trustees (1993-2010).



1992

The first Worldwide Campus-specific scholarship is established and named the **Extended Campus Annual Fund Scholarship**. In 2005, the name is changed to the **Worldwide Patron's Scholarship Fund**.

1993

DECEMBER 29

The oldest recorded planned gift, a charitable trust established by **Raymond B. Sigafos**, who served on the Embry-Riddle Board (1981-2009), is designated to create the **Raymond B. Sigafos Endowed Scholarship**. In 1995, an additional trust is established by Sigafos to support the scholarship.

1995

The first named building at the Prescott Campus due to philanthropy is dedicated. **The King Engineering & Technology Center** is named for **Ed King** (HonDoc '90), who served on the Embry-Riddle Board of Trustees (1987-1996), and as trustee emeritus (1996-2010).

2000

JANUARY 17

The first named building on the Daytona Beach Campus due to philanthropy, the **Capt. Willie Miller Instructional Center**, is dedicated, in recognition of a major gift from Miller's wife, **Dorothee Miller**.

**Christine and Steven Udvar-Hazy** commit the largest one-time gift to the Prescott Campus. Their gift helps construct **Academic Complex I** (2005) and the **Christine and Steven F. Udvar-Hazy Library and Learning Center** (2008).

2002

The first major philanthropic artwork is installed on the Daytona Beach Campus, a gift from **Helen Wessel**. Wessel later commissions and installs four additional artworks on the campus.

The Embry-Riddle Athletics Fieldhouse at the Daytona Beach Campus is dedicated the **ICI Center** in recognition of a major gift from **Mori Hosseini** (HonDoc '13; '78, '79, '82, DB), chairman and CEO of Intervest Construction Inc. (ICI). The occasion marks the first philanthropic naming of an Embry-Riddle athletics facility. Hosseini has served on the Embry-Riddle Board of Trustees since 1999 and in 2014, he became the first Embry-Riddle alumnus to chair the board.

2007

JUNE 20

The largest one-time gift in the history of Embry-Riddle's Daytona Beach Campus is received from **James Hagedorn** ('79, DB), chairman and CEO of The Scotts Miracle-Gro Company in Maryville, Ohio, and former Embry-Riddle Board member (2005-2013). The **Daytona Beach Campus Aviation Complex** is dedicated in his honor in 2011.

2013

JANUARY 28

The largest one-time scholarship gift to the university is received from an anonymous donor. The gift establishes a university endowed **Presidential Scholarship**.

2014

The **university endowment surpasses \$100 million** for the first time.

2015

The first endowed professorship, the **Raisbeck Engineering Design/Build/Test Chair**, is established with a major gift from the **Raisbeck Foundation** and **James and Sherry Raisbeck**.





# NEW HEIGHTS

In Fiscal Year 2016, as we celebrate the history of philanthropy at Embry-Riddle, it is especially fitting that the university made some new history by securing the support of **3,378** donors—an all-time high—for a total of **\$5,002,610**.

Also reaching record levels, faculty and staff participation soared to 36 percent, up 13 percent from 2015.

For the seventh consecutive year, scholarship support led the way with \$3.0 million dedicated to attracting and retaining the best students.

Fiscal Year 2016 also marks another strong year in support of

building our capacity for growth and innovation. Contributions to support facilities and academic programs totaled more than \$1.3 million, helping insure that the university can expand its educational and research capabilities.

The university's endowment closed the year at approximately **\$111,342,000**.

**\$10,454**

The Daytona Beach 2015-16 Senior Classes raised \$10,454 toward endowing the **Senior Class Council Senior Eagle Scholarship**, bringing the scholarship fund to \$40,500.

**RECORD NUMBER OF DONORS OVERALL**

**13%**  
growth since  
FY 14-15

**FACULTY AND STAFF PARTICIPATION**

Faculty and staff participation is at 36 percent, up 13 percent from the previous fiscal year — an all-time high.

**No. of Faculty/Staff Donors**

FY 15-16 Donors: **773**

FY 14-15 Donors: **683**

**9%**  
growth since  
FY 14-15

**HISTORY OF NUMBER OF DONORS OVERALL**

The number of donors has grown 82 percent since 2001, — up 9 percent from the last fiscal year alone.

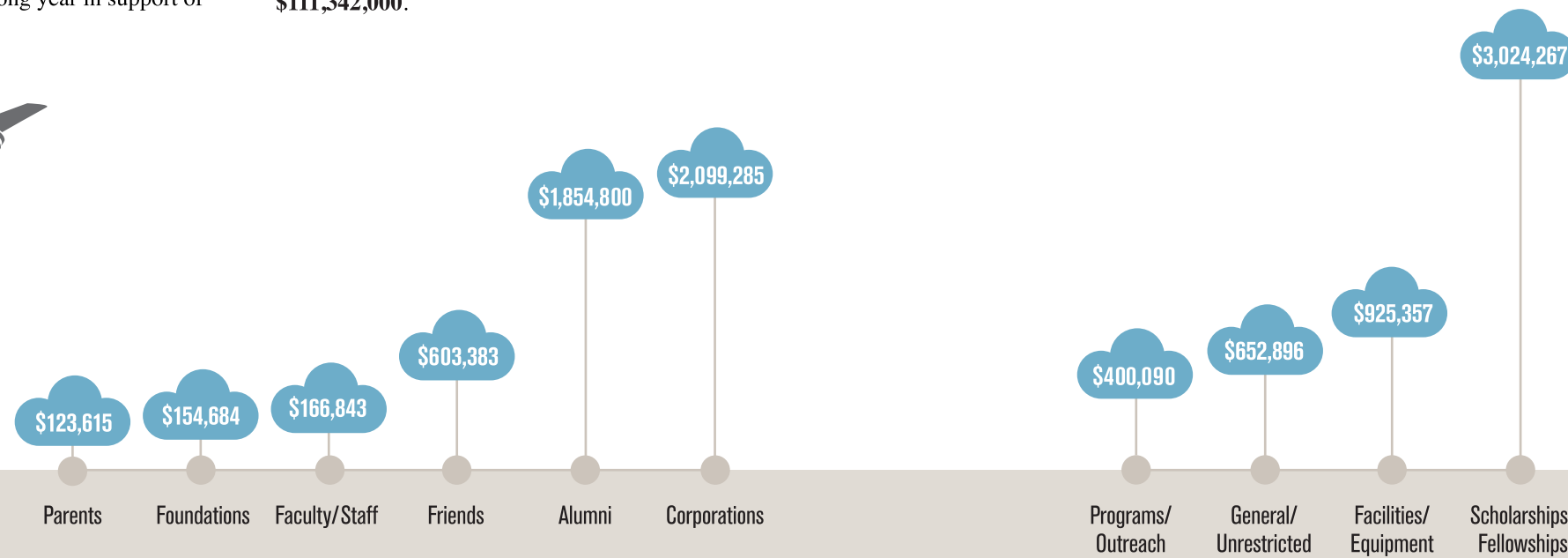
Year	No. of Donors
2016	<b>3,378</b>
2015	<b>3,111</b>
2014	<b>3,233</b>
2013	<b>2,989</b>
2012	<b>2,947</b>
2011	<b>2,942</b>
2010	<b>2,732</b>
2009	<b>2,712</b>
2008	<b>3,028</b>
2007	<b>3,000</b>
2006	<b>2,295</b>
2005	<b>2,301</b>
2004	<b>2,160</b>
2003	<b>1,640</b>
2002	<b>1,309</b>
2001	<b>1,857</b>

**\$111,342,000**

The **Embry-Riddle endowment** reached a record figure of \$111,342,000.

## PHILANTHROPY HIGHLIGHTS

FY 2015-16



PHILANTHROPY BY SOURCE

PHILANTHROPY BY PURPOSE



# LIFETIME & LEGACY DONORS

Through their support and enthusiasm for the Embry-Riddle mission and their passion for philanthropy to the university, members of the Leadership Gift Societies continue to build the legacy that is Embry-Riddle.

The Leadership Gift Societies recognize the generosity of these donors.

## JACK R. HUNT SOCIETY

Named for Embry-Riddle's first university president, the Jack R. Hunt Society honors donors whose lifetime and/or planned gifts to Embry-Riddle total \$1 million or more.

## JOHN PAUL RIDDLE SOCIETY

Honoring Embry-Riddle's founder, the John Paul Riddle Society recognizes donors who make lifetime and/or planned contributions totaling at least \$500,000.

## T. HIGBEE EMBRY SOCIETY

Named for John Paul Riddle's entrepreneurial partner and Embry-Riddle's co-founder, the T. Higbee Embry Society recognizes donors with lifetime and/or planned gifts of \$100,000 or more.

## LEGACY SOCIETY

Recognizing donors who include Embry-Riddle in their estates, the Legacy Society supports multiple generations of aerospace/aviation leaders.

## JACK R. HUNT SOCIETY

### CORPORATIONS AND FOUNDATIONS

Airbus Services Company  
Boeing Company Charitable Trust  
Boston Scientific  
The Robert and Lois Braddock Charitable Foundation  
Emil Buehler Perpetual Trust  
Honeywell  
Paul & Constance Hunter Foundation  
Intervest Construction  
The MathWorks  
Rolls-Royce Corporation  
The Wessel Foundation

### ALUMNI AND FRIENDS

Jay (HonDoc '08) and Leila Adams  
Michele Bowman-Underwood and Joseph Underwood  
Frederick ('72, DB) and Janice Brown  
James and Beverly Cone  
DeRhoads Dolan  
Samuel Goldman\*  
James ('79, DB) and Karli Hagedorn  
Mori (HonDoc '13; '78, '79, '82, DB) and Forough ('85, DB) Hosseini  
Roger Koch  
L. Gale Lemerand  
Dorothee Miller\*  
D. Keith ('95, '97, WW) and Alice Mosing  
Lee Noe  
David and Andrea Robertson  
S. Harry (HonDoc '72) and Linda Robertson  
Nick and Joan Spiroff  
James and Marilyn Subach  
Steven (HonDoc '98) and Christine Udvar-Hazy  
Peter ('69, WW) and Linda Vosbury  
Helen Wessel

## JOHN PAUL RIDDLE SOCIETY

### CORPORATIONS AND FOUNDATIONS

Air Force Association  
Aircraft Owners & Pilots Association  
Analytical Graphics  
Boeing Company  
Brown & Brown of Florida  
Edyth Bush Charitable Foundation  
Constellation Productions  
Cove Partners  
Daytona Beach Campus  
Student Government Association  
Daytona Beach Racing & Recreational Facilities District  
Frasca International  
Robertson Research Group

Gen. William W. Spruance Foundation  
State of Florida  
URS

### ALUMNI AND FRIENDS

Matthew Andersson ('78, DB)  
Estate of Farshad K. Babazadeh  
James\* and Essie Barfield\*  
Theodore ('82, '89, DB) and Muriel Beneigh  
J. Powell and Nancy Brown  
Robert and Jennifer Crouch  
Gary (HonDoc '69)\* and Else Cunningham  
Tine (HonDoc '69)\* and Eunice Davis\*  
Andrew Deas ('60, MC)  
David Gordon ('80, DB; '81, WW)  
Estate of William Haas  
Jim (HonDoc '13) and Carole Henderson  
Constance Hunter\*  
Edward (HonDoc '90)\* and Carolyn King  
James Kolbe  
William Pitts ('60, MC)  
Deborah Lee Prescott  
Richard and Phoebe Snyder  
William (HonDoc '87)\* and Eunice Spruance\*  
Raymond Stratton ('78, DB)  
John and Lynne Thelan  
Lane Wipff

## T. HIGBEE EMBRY SOCIETY

### CORPORATIONS AND FOUNDATIONS

AAR Corporation  
AlliedSignal Air Transport Avionics  
American Airlines  
Associated Aviation Underwriters  
Aviall  
Aviation Education Foundation  
BOSH Global Services  
Brown & Brown Insurance  
Cessna Foundation  
Cobb & Cole  
Combined Federal Campaign  
Computer Presentations and Training  
Consolidated-Tomoka Land Company  
CSG Enterprise  
Dade Community Foundation  
Dassault Falcon Jet Corporation  
Tine W. Davis Family Foundation  
Daytona Aerospace Industrial Park Joint Venture  
Daytona Mitsubishi/Kia  
Delta Air Lines  
DS SolidWorks  
Embry-Riddle Board of Visitors Association, Daytona Beach  
Equis Financial Group  
Florida Independent College Fund  
Florida Power & Light

Follett Higher Education Group  
Gulfstream Aerospace Corporation  
Halifax Paving  
Honeywell International Foundation  
International Order of Characters  
International Speedway Corporation  
ISTAT Foundation  
Kresge Foundation  
J.W. Kieckhefer Foundation  
Bill & Moya Lear Charitable Foundation  
Link Foundation  
Lockheed Martin Corporation  
Marmot Foundation  
The Miami Foundation  
Mead Witter Foundation  
Mission Air Support  
Northrop Grumman Corporation  
Amelia Peabody Charitable Fund  
Professional Food Service Management  
The Raisbeck Foundation  
The Robertson Foundation  
Robinson Helicopter Company  
Rockwell Collins  
Sodexo  
Tecnam Aircraft  
Textron Aviation  
The Albert L. Ueltschi Foundation  
United Technologies Corporation  
US Airways  
The Wachovia Foundation  
Wells Fargo Bank  
The Wings Club Foundation

### ALUMNI AND FRIENDS

George and Patricia Adam  
Bob and Carol Allen  
John Amore ('73, DB)  
Peg Billson ('84, PC)  
Estate of Virginia T. Bingham  
Benjamin ('82, DB) and Signe Canfield  
Lawrence and Barbara Clarkson  
Elizabeth Coley\* and William Smith\*  
Victor and Betsy Cresenzo  
Guy Damore  
Teresa Delafosse  
Linda Downs  
Charles and Elizabeth Duva  
Philip (HonDoc '04; '72, DB) and Joyce\* Elliott  
William\* and Betty Jane France\*  
Rudy and Lucille Frasca  
George Gallaspy  
Albert and Toni Helfrick  
Louis\* and Dava Hoffman  
Russell Holderman (HonDoc '74)\*  
Daniel and Diane Izard  
Sharon Jones ('84, PC)  
Pamela and Gale Jose  
Jesse C. and Tanya Wise King  
Moya Lear\*  
George Lerman  
Betty MacDonald  
William March ('81, WW)\*  
Joseph ('74, DB) and Catherine Martin  
Joseph and Joan McClure  
Robert McKay\*  
George Mendonca  
Estate of Louisa Morse  
Richard ('86, DB) and Denise Nisbett  
Emily and Thomas Nissley  
James and Janet O'Connor  
William\* and Dixie O'Connor  
Quentin\* and Jeani Pearson  
James and Sherry Raisbeck

James Ray  
Nancy Robertson\*  
James Robinson\*  
Jean and Genevieve Rosanvallon  
David and Yolande\* Salter  
Roger and Barbara Schwarz  
Christine and Louis C. (H '07, DB) Seno  
Raymond and Frances Sigafoos  
Al Skeaney\*  
David and Toni Slick  
Steven (HonDoc '06) and Nancy Sliwa  
Estate of Mary Spence  
Lee Spence\*  
Thomas\* and Barbara Staed  
Edward (HonDoc '74)\* and Dorothy Stimpson  
Estate of Druria L. Sylvester  
Maurice\* and Dorothy Taylor\*  
Albert Ueltschi (HonDoc '97)\*  
Lawrence\* and Virginia Vagnozzi\*  
Charles Vouaux\*  
Estate of Ann R. Weaver  
Alexander and Mary Wells  
Nancy Wingert ('81, WW)  
R. Lyman (HonDoc '96) and Leslie Wood  
Gertrude Worthington\*

## LEGACY SOCIETY

Jay (HonDoc '08) and Leila Adams  
Matthew Andersson ('78, DB)  
Patricia and Edward\* Arntzen  
Robert\* and Mary Beilman\*  
Robert ('71, DB) and Cheri Belinke  
Theodore ('82, '89, DB) and Muriel Beneigh  
Catherine and Gordon Benson  
Matthew Berk ('58, MC)\*  
Peg Billson ('84, PC)  
Stephen ('86, PC) and Terri Blanchette  
Gerald Bott  
Michele Bowman-Underwood and Joseph Underwood  
The Robert and Lois Braddock Charitable Foundation  
Frederick ('72, DB) and Janice Brown  
Benjamin ('82, DB) and Signe Canfield  
Richard ('87, WW) and Debra Cargo  
Robert and Bobbi Coleman  
Allen Colfry ('66, DB)  
James and Beverly Cone  
Robert and Jennifer Crouch  
David\* and Marguerite Cummock  
Gary (HonDoc '69)\* and Else Cunningham  
Teresa Delafosse  
DeRhoads Dolan  
George Errick  
Charles\* and Karen Ford  
James ('92, '95, DB) and Suellen Gallogly  
Samuel Goldman\*  
Dave and Nancy Gonnion  
David Gordon ('80, DB; '81, WW)  
Charles ('75, DB) and Liz Graf  
Nancy Graham\*  
William Haas\*  
I.V. and Loma Hamilton  
Cecile Hatfield  
Dennis ('82, PC; '85, WW) and Tracy Hicks  
George ('78, WW) and June Hill  
Louis\* and Dava Hoffman  
Mori (HonDoc '13; '78, '79, '82, DB) and Forough ('85, DB) Hosseini  
Constance Hunter\*  
James ('75, DB) and Lori Hunter

John Hurley  
Charles and Marion\* Johnson  
Sharon Jones ('84, PC)  
Ronald and Carolyn Kerlin  
Jesse C. and Tanya Wise King  
Roger Koch  
James Kolbe  
Martin Korges ('81, DB)  
Kenneth\* and Mary Lamalie  
L. Gale Lemerand  
Robert ('57, MC) and Roxie Lewis  
Robert\* and Virginia Lyall\*  
Betty MacDonald  
William March ('81, WW)\*  
George and Karen McCown  
Robert McKay\*  
Roy and Mary Miller  
Dan and Kelly Montplaisir  
D. Keith ('95, '97, WW) and Alice Mosing  
Terry ('94, WW) and Nancy Mularkey  
Donald Needham  
Emily and Thomas Nissley  
Lee Noe  
William\* and Dixie O'Connor  
John (H '16, PC) and Ann\* Olsen  
C. David ('74, DB) and Carol Owens  
Robert Oxley  
Nancy Pettit ('74, DB)  
William Pitts ('60, MC)  
Curtis ('72, DB) and Mutsuko Poree  
Deborah Lee Prescott  
Walter Prettyman ('75, DB)  
Joseph\* and Margaret Rhodes  
Charles and Joan Richardson  
Gordon\* and Celia Ritter  
David and Andrea Robertson  
Fred ('68, DB) and Julie Robinson  
Robert Rockett  
Nancy Samp  
Christine and Louis C. (H '07, DB) Seno  
Raymond and Frances Sigafoos  
Mary Spence\*  
Nick and Joan Spiroff  
Raymond ('75, DB) and Wendy Springsteen  
William (HonDoc '87)\* and Eunice Spruance\*  
Thomas\* and Barbara Staed  
Betty Stern  
Edward (HonDoc '74)\* and Dorothy Stimpson  
Raymond Stratton ('78, DB)  
James and Marilyn Subach  
Maurice\* and Dorothy Taylor\*  
Dianne ('81, DB) and Raymond Thompson  
Harvey Thompson\*  
Carlos Villa ('10, WW)  
Peter ('69, DB) and Linda Vosbury  
Charles Vouaux\*  
Ann Weaver\*  
Alexander and Mary Wells  
Jody ('91, PC; '05, WW) and Daniel Wichman  
Fred\* and Alice Wills  
Nancy Wingert ('81, WW)  
Kevin Wisneski ('98, DB)  
Phillip Woodruff ('71, DB)  
James ('80, DB) and Clara Zeiler

### CAMPUS LEGEND

MC - Miami, Fla. (pre-1965)  
DB - Daytona Beach, Fla.  
PC - Prescott, Ariz.  
WW - Worldwide/Online Campus

\* Deceased



**THE FULL ANNUAL DONOR RECOGNITION LIST IS NOW ONLINE**

Your donation matters and is important to Embry-Riddle's continued success. We are grateful to all of our donors and for each contribution—large and small. This year, in an effort to save costs and to be a more responsible steward of our natural resources, we are publishing the comprehensive list of Embry-Riddle's annual donors online only. Please visit [givingto.erau.edu/donor-recognition](http://givingto.erau.edu/donor-recognition) and click on "Gift Clubs" to view and search the entire listing.



## HISTORY OF SUPPORT

The Boeing Company has partnered with Embry-Riddle since 1993. The partnership has grown to include support of employee education through Embry-Riddle's Worldwide Campus, student internships and the newly established Bridge Program that matches students who are interested in working for the company with alumni already working there.

20+

Years Boeing has been a top employer of ERAU graduates

2,679

Embry-Riddle alumni employed by The Boeing Company

45

Embry-Riddle interns hosted by Boeing each summer

Geoffrey Mandell

David Massey

# DEDICATION

AIR FORCE VETERAN AND BOEING SCHOLARSHIP RECIPIENT IS FOCUSED ON MAKING AN IMPACT IN AEROSPACE ENGINEERING

BY MELANIE STAWICKI AZAM

Lying face down in the sand during a mortar rocket attack on his base in Afghanistan, Geoffrey Mandell focused on what he would do if he made it back home alive.

"I realized I wanted to do more with my life and help humanity somehow," says Mandell, who served four years in the U.S. Air Force, including seven months in Afghanistan.

A few years later, the aerospace engineering major at Embry-Riddle's Daytona Beach Campus is working to do just that. "My end objective is to do as much as I can to improve our space exploration path," he says. After experiencing war, he says he views space exploration as an area that fosters international cooperation and peace.

"MY END OBJECTIVE IS TO DO AS MUCH AS I CAN TO IMPROVE OUR SPACE EXPLORATION PATH."

— GEOFFREY MANDELL

A junior at Embry-Riddle, Mandell is well on his way to achieving his goal. He has an internship scheduled at SpaceX in 2017, and he was recently awarded the prestigious Boeing College of Engineering scholarship.

"For Boeing to recognize me and the hard work I have put in—not only the past couple of years here at Embry-Riddle, but in the years during my enlistment—is an incredible feeling," says Mandell.

His GI Bill® did not cover all of his educational and living costs, so Mandell says the scholarship

helps financially, allowing him to focus completely on his studies.

Brian Hoefig ('86, DB; '97, '98, WW), director of operations for the 737 Delivery Center and the focal liaison for Embry-Riddle partner programs at The Boeing Company, says the decision to support Embry-Riddle students is simple. "It's about giving them an opportunity to fulfill their dreams in education, dreams that they may not realize if they weren't given a little bit of assistance. And it really helps us enhance our future pipeline of leaders."

### DIFFICULT JOURNEY

Mandell is looking forward to becoming a leader in the aerospace industry, but his journey has not been easy. An aircraft electrical technician in the Air Force, the base where he was stationed in Afghanistan in 2013 was a frequent target for mortar fire. His tour abroad ended in March 2014. He returned to the states with a permanent back injury and memories of war that don't quickly fade.

Shortly thereafter, he discovered his dad needed a liver transplant and he had a match. "They wanted to do the surgery as soon as possible," says Mandell, who donated a portion of his liver in October 2014. When he was still recovering, Mandell enrolled at Embry-Riddle in January 2015.

Mandell says he has no regrets about his military service. "I learned things about the world and myself that I never would have learned," he says. "And there are friends of mine who didn't make it back, so I'm grateful."

His time in the Air Force also convinced him to continue his education. "The whole time I was in the military, I knew I wanted to go back to school," he says.





From left to right:  
Gordon Jiroux, Terry Hane  
and Kurt Robinson

## SUPPORTING STEM

Donors to the Embry-Riddle STEM Education Center (\$25,000 and above):

- Mike Fann, Fann Contracting
- Gordon and Donna Jiroux, Universal Helicopters Inc.
- Mark Lapole ('84, PC)
- Jim and Linda Lee
- Gabe ('88, PC) and Carmen Navarrete
- Prescott Faculty/Staff Annual Fund Campaigns
- Prescott Student Campus Enhancement Fund
- James and Sherry Raisbeck, Raisbeck Engineering
- Kurt Robinson and Terry Hane, Robinson Helicopter Company

Loretta Conley/Robinson Helicopter Company

# PASSION

UNIVERSAL HELICOPTER INC. AND  
ROBINSON HELICOPTER COMPANY UNITE  
IN SUPPORT OF STEM EDUCATION CENTER

BY SARA WITHROW

STEM (Science, Technology, Engineering and Mathematics) education can mean many things to different people, but to a certain few like-minded Embry-Riddle donors, it begins and ends with a rotor blade.

Gordon Jiroux, president and founder of Universal Helicopters Inc. (UHI), and siblings Kurt Robinson, president and CEO of Robinson Helicopter Company (RHC), and Terry (Robinson) Hane, director of sales and marketing at Robinson Helicopter, have joined forces to express their passion for helicopters and for STEM education at Embry-Riddle.

UHI and RHC recently teamed up in the form of matching contributions totaling \$300,000 to help build a 50,000-square-foot STEM Education Center and Planetarium at Embry-Riddle's Prescott Campus in Arizona.

"It's Robinson's charity [Science, Technology, Engineering and Math]," says Kurt Robinson. "Obviously we use STEM excessively at Robinson Helicopter, and we're very proud to support it."

The combined gift will also create a lasting tribute to Frank Robinson, the father of helicopter civil aviation.

Kurt and Terry were in high school and middle school, respectively, when their dad, Frank Robinson, a single parent, quit his job at Hughes Aircraft Company and started his own business out of their home.

"Early on, he had this vision: He had a dream that flying should be accessible. That it should be something that wasn't just reserved for military agencies or for the very rich," Terry says. "And I think he succeeded. His helicopters [R22, R44, R66] have changed general aviation."

The atrium of the future STEM Education Center, scheduled to open in 2017, will be

named in Frank Robinson's honor and will display artifacts and images highlighting the history of Robinson Helicopter. The planetarium lobby will be named for UHI and will showcase its connection to RHC and its role in advancing helicopter flight training.

For Jiroux, supporting the STEM Education Center is personal. An RHC dealer and service center, he started his first flight school in 1982 with the Robinson R22 ship No. 4, which Frank Robinson helped him purchase. The exclusive provider of helicopter flight training to Embry-Riddle students (since 2010) at the Prescott Campus, Jiroux now has six training locations in four states and employs 76 flight instructors.

"Without Frank Robinson, there would be no Universal Helicopters," he says.

## STEM RISING

Watch live video feed of construction:  
[prescott.erau.edu/about/live-cameras](http://prescott.erau.edu/about/live-cameras)

It was Frank who gave Jiroux his start in the business. He was also a surrogate father of sorts.

"My dad died when I was 21. A son needs a dad for many things, including direction and advice regarding things of a business nature. Frank Robinson completely filled that void in my life," Jiroux says.

"Frank's uncompromising quest to build the least expensive, most reliable helicopter changed the helicopter industry forever. I am hopeful that the next Frank Robinson will be inspired and emerge from Embry-Riddle, in part through the information about Frank's incredible life achievements that will be on display in the STEM Education Center for decades to come."



Renee Lemmer McCormack, left, and Kay Lemmer Collier hold a portrait of Mark E. Lemmer at the Prescott Campus Flight Line.

# DEVOTION

ENDOWED SCHOLARSHIP  
HONORS PILOT AND EMBRY-RIDDLE  
ALUMNUS MARK E. LEMMER

BY SARA WITHROW

On May 15, 2016, family members of the late-Mark E. Lemmer ('69, DB, Flight Training) watched as an Embry-Riddle Cessna 172 training aircraft bearing his name soared above the Prescott Campus in Arizona.

There to commemorate Mark's life and passion for flight with a special sendoff event, 14 of his closest family members including six grandchildren were treated to short flights in the plane named in his honor. They also enjoyed a lunch, tour of the campus and flight simulator time.

"This was the most honorable and appropriate tribute to Mark that we could envision," says Kay Lemmer Collier, Mark's surviving ex-wife, who along with their daughter Renee Lemmer McCormack conceived the event and named the plane with a contribution to Embry-Riddle.

An endowed scholarship, also established in Mark's name by Kay and Renee, will ensure future pilots experience the same joy he did as a pilot. The scholarship will benefit aeronautical science students at Embry-Riddle's Prescott and Daytona Beach campuses.

"We wanted to create a lasting legacy in Mark's memory, and after researching his only alma mater and given his personal history there, we realized that this was an institution worth investing in. The fact that this endowed scholarship will go on in perpetuity means that Mark's legacy will go on—it's not just a one-time tribute. It will help many

and will be remembered by all who contribute and benefit from it through the years," Kay says.

In the late 1960s, Mark Lemmer came to Embry-Riddle's Daytona Beach Campus on a scholarship of sorts, himself. His uncle, Fred Marks, a United Airlines captain, loaned him the tuition money to earn his flight certificate.

"Without him as a benefactor, it would have been unlikely that Dad would have found the joy he did in flying," Renee says. "The Mark E. Lemmer Memorial Scholarship was created with this story in our minds and hearts. Our whole family has been so positively affected by my Uncle Fred's generosity and his belief in a young person's potential. We are all very grateful to have found a way to emulate this gesture and help other individuals discover their love for flight."

Following completion of his education, Mark flight instructed at Timmerman Airport in Milwaukee, Wis. On April 7, 1969, he was hired by United Airlines, where on occasion he would join his Uncle Fred in the cockpit. Mark flew for 32 years for United. While working there, he met Kay, a flight attendant. They were married in 1979 and remained friends despite a divorce in 2001. Mark Lemmer died of natural causes on Sept. 25, 2015, at the age of 68.

"He was a very skilled and well-liked captain, according to our many colleagues who flew with him," says Kay of Mark. And he flew because he loved it. "He would always say to his co-pilots, 'If we're not having fun, what are we doing here?'" she recalls.

It's that fun-loving spirit that his family hopes to preserve with the Lemmer Cessna. "I'm so pleased to know that the little Cessna bearing Dad's name is soaring around the skies of Arizona. It makes me feel like he's still up there in the cockpit flying; it's exactly where he'd most like to be," Renee says.

"HE WOULD ALWAYS SAY  
TO HIS CO-PILOTS, 'IF WE'RE  
NOT HAVING FUN, WHAT ARE  
WE DOING HERE?'"

— KAY LEMMER COLLIER



“JAN AND I WANT TO ENCOURAGE PEOPLE TO THINK OUTSIDE THE BOX AND CREATE THINGS THAT COULD HELP PEOPLE IN AVIATION.”

— RICK BROWN



Rick and Jan Brown

Brian Tietz

# VISION

PILOT AND BUSINESSMAN FREDERICK 'RICK' BROWN'S RECENT PLANNED GIFT HONORS THE ENTREPRENEURIAL SPIRIT THAT MENTOR JACK HUNT ONCE SPARKED IN HIM

BY MELANIE STAWICKI AZAM

As a toddler, Frederick “Rick” Brown (’67, Flight Training, ’72, DB) soared through the Central Florida skies with his grandmother Peggy O’Neil, who was a pilot in the 1940s and instilled in him a lifelong love of flying.

“My grandma took me flying when I was only 18 months old,” says the retired U.S. Air Force pilot who spent 35 years at United Airlines.

Brown’s passion for entrepreneurship is just as strong as his love for flight, but it ignited years later when he was a student at Embry-Riddle. It was there that he encountered then-university President Jack Hunt and watched him grow a small flight school into a full-fledged university.

“Jack Hunt was a visionary and an entrepreneur. He was a really strong mentor for me,” says Brown, who with his wife, Jan, launched an airline in 1994 under the Frontier Airlines name. A different airline with the same name had operated previously from 1950-1986.

It was Brown’s love of aviation, entrepreneurship and of his alma mater that prompted him to make a major planned gift to Embry-Riddle this past spring. The gift will create the Rick and Jan Brown Endowed Scholarship and support the Daytona Beach College of Business’ Center for Entrepreneurship.

“With the Daytona Beach Campus celebrating 50 years of offering business degrees this year, Rick and Jan Brown’s endowed scholarship will help us continue to attract students into our ever-evolving, industry-responsive programs,” says Michael J. Williams, dean of the College of Business at the Daytona Beach Campus.

Additionally, the Browns’ gift will have a tremendous, positive impact on students pursuing

their entrepreneurial ambitions at Embry-Riddle, says Michael R. Bowers, professor of entrepreneurship and director for the Center for Entrepreneurship.

“It’s all about giving back and mentoring,” Brown says. “Aviation is a wonderful career, and someone needs to continue to promote it at a university like Embry-Riddle.”

## A TRUE FLORIDA BOY

Born in Ocala, Fla., Brown grew up in nearby Winter Park and initially studied engineering at the University of Florida.

But his heart was in aviation, not engineering, so he sold his car to buy a plane and enrolled in flight lessons at Embry-Riddle. At the time, the flight school had fewer than 50 students and a handful of instructors, so Hunt was just another face on campus.

“You knew everyone,” says Brown, who completed his flight training program in 1967 and became a flight instructor at Embry-Riddle. From late 1967 to early 1969, he also flew as a co-pilot for Shawnee Airlines. In 1969, United Airlines came knocking and Brown left to fly for them. When he was laid off two years later, he returned to Embry-Riddle to earn his bachelor’s degree.

“When I came back in 1971, I had three kids and I took 21 hours (of classes per semester),” he recalls. To help make ends meet during that time, he got a job flying for NASCAR.

He also watched Hunt’s vision come to fruition. “I watched the university grow and grow; each time I came back, there was a different building,” Brown says. “It became very professional and international.”



A younger Rick Brown, left, and the NASCAR flight operations team in 1971 pose with his assigned daily driver during a layover at the NASCAR race in Talladega, Ala. A state-issued license plate was not necessary, due to Bill France's local fame as the founder of NASCAR. Brown was a corporate pilot for France from 1971-72, while he was a student at Embry-Riddle.

Far right: Brown was the first pilot hired at Shawnee Airlines in 1968. He flew the Beech 99 all over Florida until 1969, when he was hired by United Airlines.



"I'VE NEVER HAD ONE JOB.  
I AM A TRUE ENTREPRENEUR."

— RICK BROWN

## A NATURAL ENTREPRENEUR

Brown returned to United Airlines, where he specialized in flight training, accident investigation and systems safety until he retired in 2004. He also served in the Air Force Reserve for 21 years, working as a pilot and director of flight safety.

But he was never satisfied just working for someone else. He was perpetually starting his own companies and doing consulting work.

"I've never had one job," Brown says. "I am a true entrepreneur."

In 1989, Brown bought Arnaautical Incorporated in Denver, Colo., which did contract training for United Airlines; and then started a division of the company called Air Crew Resources, which provided flight training for foreign governments and airlines. That work revealed to him how much he loved training other aviators.

"It is a passion of mine that started as a flight instructor at Embry-Riddle," Brown says. "You are a true mentor from the time you meet

someone—and you show them the importance of standardization to being a [quality] team and a crew member." He adds, "Standardization of procedure is a very important issue for safety in the airlines. It is critical."

## FRONTIER DAYS

Frontier Airlines wasn't the first company Brown started, but it was the largest. Jan Brown had worked as a flight attendant for the original Frontier Airlines from 1976 until it went out of business in 1986. The couple had identified a definite need for an airline in the Denver market and started working out a plan in 1993 to launch a new Frontier Airlines.

"At a barbecue restaurant on a Sunday in Denver, we decided we were going to start an airline on a cocktail napkin," Brown says. "It only took us nine months to start up."

The Browns put their life savings into the project, recruited a team to help them start the airline and did an initial public offering to raise more funds.

"Networking is the backbone of any business," Brown says. "The biggest challenge is putting together the team."

The couple sold their share of the company in 1997, but they weren't ready to walk away from aviation.

Brown continued to work in flight operations training and aviation safety, serving as a consultant for Boeing Training Services to Korean Airlines from 2007-2015. He also spoke at graduate schools in Korea on entrepreneurship and aviation learning styles.

## BACK TO HIS FLORIDA ROOTS

With three grown children and two grandchildren, Brown spends more time in Florida now, but he still does international consulting work. He most recently worked with an aviation training company in Dubai.

"I am still involved in flight training, because it is so important to be able to mentor," he says.

He also supports his alma mater. The first official ambassador for the Daytona Beach Campus' College of Business, in September, Brown was a guest presenter at Embry-Riddle's Asia Campus in Singapore. On Dec. 1, 2015, he spent a day at the Daytona Beach Campus sharing his expertise with students.

"It's important that people have an entrepreneurial spirit in aviation," he says. "Jan and I want to encourage people to think outside the box and create things that could help people in aviation."

For Brown, creating an endowed scholarship and supporting the growth of the Center for Entrepreneurship at Embry-Riddle is also a chance to further the work of his mentor, Jack Hunt, to improve the university and the field of aviation.

"Throughout my entire life, I always had this vision of contributing in some way to improve the field of aviation," he says. "I think Jack would be proud of me."



# DISTINCTION

ROCKWELL COLLINS SUPPORTS  
MORE EMBRY-RIDDLE STUDENTS  
WITH TIER ONE DESIGNATION

BY ALAN MARCOS PINTO CESAR

Embry-Riddle's decades-long partnership with Rockwell Collins grew stronger in October 2015. The avionics and information technology company elevated Embry-Riddle to a Tier One-level school, indicating more collaborative projects and increased philanthropy to student groups.

"Tier One status represents our growing partnership in a variety of metrics, such as hiring rates, retention rates, and performance reviews of interns and full-time employees that come from Embry-Riddle," says Diarmuid Strasser ('91, DB), a Rockwell Collins senior systems engineer.

Rockwell Collins representatives have been coming to Embry-Riddle's annual Industry/Career Expo to hire students since 1998. Today, nearly 400 alumni work for Rockwell Collins, about half of them at its headquarters in Cedar Rapids, Iowa.

Upgrading from a "growth school" to a Tier One school means Embry-Riddle is eligible for between \$75,000 and \$125,000 in annual financial support from Rockwell Collins. Donations for fiscal year 2016 totaled \$102,500, and were given to 18 different student groups and initiatives.

Christian Pierre, president of Embry-Riddle's National Society of Black Engineers (NSBE) chapter, says Rockwell's \$5,000 gift will help introduce local minority children to science, technology, engineering and mathematics.

"We do this through workshops, mentor relationships, community service and by hosting events. The gift from Rockwell will help fund all those endeavors along with sponsoring members to go to the national convention," Pierre says.


Embry-Riddle's K-12 Education Outreach Summer Academy received more than \$10,000 to sponsor its Radar Camp, which teaches kids, ages 14-18, about radar technology. Pamela Peer, director of the program, says she was able to reduce tuition for the camp because of the sponsorship, allowing more children to attend. "Without the contribution from Rockwell Collins, the camp would never have been able to run," Peer says.

This relationship of collaboration goes both ways: Strasser has been a member of Embry-Riddle's Electrical, Computer, Software, and Systems Engineering (ECSSE) Industry Advisory Board since 1999. Other Rockwell Collins employees are also involved in Embry-Riddle research, advisory boards and student groups.

"By working with us in the Tier One capacity, we talk to Rockwell Collins a lot more. They're sponsoring our upcoming hackathon, which is an opportunity for them to meet prospective interns and employees. And they're helping us start an AFDX [Avionics Full-Duplex Switched Ethernet] research lab," says Tim Wilson, ECSSE department chair.

"We'd like to have faculty go to Rockwell Collins for sabbatical, to have more of their engineers on our advisory boards, and continue to have their personnel involved in our capstone design projects."

Strasser says support will continue to grow. "The university is aligned with aerospace and industry, and researches relevant technologies. These students have demonstrated a very strong desire and passion to be the best and to be in aviation. It makes sense that Rockwell would support them."



Nicholas Valois ('16, PG), seated, and pictured below, and Alexander Chambers are members of the Prescott Campus Eagle Works team, one of the student groups that received a generous donation from Rockwell Collins. The team is designing and building an electric vehicle that will attempt to break the E-1 land speed record.

"THESE STUDENTS HAVE DEMONSTRATED A VERY STRONG DESIRE AND PASSION TO BE THE BEST AND TO BE IN AVIATION. IT MAKES SENSE THAT ROCKWELL WOULD SUPPORT THEM."

— DIARMUID STRASSER  
ROCKWELL COLLINS ENGINEER





# \$40,000

Amount raised for the Embry-Riddle Senior Eagle Scholarship since 2013

Katelynn Collier and Thomas Darragh stand below the clock donated by the 1981 summer semester graduating class. Since 2013, graduating classes have contributed a lump sum to the Senior Eagle Scholarship.



David Massey

## ACTION

DAYTONA BEACH CAMPUS STUDENTS  
BUILD AN ENDOWED SCHOLARSHIP  
TO HELP PEERS IN NEED

BY MELANIE STAWICKI AZAM

Members of the 2013 Daytona Beach Campus' Senior Class Council were the first to suggest funding a scholarship as a collective class gift for graduating seniors needing a financial boost their last semester.

Prior to 2013, class gifts consisted largely of material items, with graduating classes donating barbecues for common areas, the clock on the John Paul Riddle Student Center tower and a 6-foot wooden propeller for the dining hall, among others.

The class of 2013 set a new precedent, though, with the creation of the Senior Class Council Senior Eagle Scholarship, and subsequent graduating classes have followed suit.

**"IT IS IMPORTANT WE  
HAVE A LEGACY THAT  
WE LEAVE BEHIND."**

**— THOMAS DARRAGH**  
SENIOR CLASS PRESIDENT  
SPRING 2016

"Each senior class wants to be the one that raises the most money," says Paul Bell, associate dean of students and adviser to the Senior Class Council. "They want to know they are helping other students after them."

"It is important we have a legacy that we leave behind," says Thomas Darragh ('16, DB), the spring 2016 Senior Class Council president.

Since 2013, more than \$40,000 has been raised to fund the Embry-Riddle Senior Eagle Scholarship—and seven students have benefited, each receiving \$500. "In a senior's eyes, that \$500 pays your last month's rent or buys a new suit or plane ticket for a job interview," Bell says.

Katelynn Collier ('16, DB), who received the spring 2016 Senior Eagle award, would agree. "Getting through that last semester, it's kind of that final leap," she says. "Every dollar helps."

The fall 2015 and spring 2016 Senior Class councils raised \$10,454 for the scholarship fund, and Darragh says he personally contributed, because of the support he received from Embry-Riddle.

"I wanted to make sure I could return the favor," he says.

Each semester, the graduating Senior Class Council can vote to raise money for the scholarship as its class gift, or choose to fund something else, says Yoon Van Hout, director of annual giving at Embry-Riddle. Overwhelmingly, the classes have supported the Senior Eagle Scholarship.

"This generosity not only speaks to the thoughtfulness of our student body, but also to their passion to make a difference and impact the world," Van Hout says.

Upon reaching the \$50,000 level, the Senior Eagle Scholarship will be endowed, allowing it to benefit graduating seniors in perpetuity; but subsequent senior classes will continue to raise funds so as many students as possible can be assisted.



# CONNECTION

CROWDFUNDING CONNECTS STUDENTS WITH DONORS

BY ALAN MARCOS PINTO CESAR

In less than a year, the new Embry-Riddle Crowdfunding platform, [crowdfunding.erau.edu](http://crowdfunding.erau.edu), which debuted last fall, helped students and faculty raise tens of thousands of dollars in support.

“The crowdfunding initiative allows students to participate in their own success and witness directly the benefits of philanthropy,” says Chris Lambert, senior executive director of development at Embry-Riddle.

To date, projects that have benefited from crowdfunding include a student team attempting to launch a rocket into space, another team set on breaking the electric land speed record, a Veteran’s group that was able to purchase a vehicle to shuttle vets around campus and several scholarship funds.

“In the past, students have wanted to raise money for their projects but have never had the outlet to do so. Now, crowdfunding enables them to go out into the community, share their amazing work and

raise money to reach their goals,” says Yoon Van Hout, director of annual giving at Embry-Riddle.

The Eagle Space Flight Team at the Prescott Campus was the first big success, surpassing its \$4,500 goal to raise a total of \$4,905 by December 2015. Bryce Chanes, a senior aerospace engineering student and the team’s founder, finds it rewarding to have small donors involved. “It’s not a corporation or the university just handing us money. It’s been a struggle but a blessing to answer to people who are actually interested in our success.”

Chanes says the campaign was effective—and, he hopes to raise twice as much on the next attempt. “Flying a rocket to space is not cheap, but it’s cheaper than people think it is,” Chanes says. “You can’t expect two or three students to raise it all from their rich uncles. ‘Oh man it’s gonna go viral’ is also not a valid expectation. It takes work from the entire team.”

The Eagle Space Flight Team plans to be the first student group to design, build and launch a rocket past the internationally recognized boundary of space—100 kilometers in altitude—and recover it intact when it lands. The Prescott Campus has already benefited from the team’s efforts: the equipment they buy is also available to other students using the labs.

Chanes stresses to donors that they’re not just kids playing around: This is serious science. The students learn how to use various testing equipment, how to mix propellant, and other career-advancing skills. “The money we raise supports a program that gives us the hands-on opportunities that we need to work in the real world. We have team members interning at top aerospace companies.”

That’s what crowdfunding is all about, Van Hout says. “Empowering students to be successful in their studies and beyond.”



The Prescott Campus Eagle Space Flight Team hopes to become the first student group to design, build and launch a rocket past the internationally recognized boundary of space.



## SENIOR EXECUTIVE DIRECTOR'S MESSAGE

*As Embry-Riddle celebrates its 90th anniversary, it is amazing to see how far we have come.*

What started as a small flight school, created in 1926 by T. Higbee Embry and John Paul Riddle, has today become the world's leader in aviation and aerospace education with graduates around the world.

But Embry-Riddle never could have reached such heights these past nine decades without its supporters. This report showcases many of the historic moments of generosity that have carried us on our journey to becoming the global institution we are today (see *Legacy*, pages 2-5).

I am happy to report that we have been fortunate to add two other key moments to that philanthropic timeline: In Fiscal Year 2016, we enjoyed a record-breaking year for the number of overall donors—with 3,378 donors, up 9 percent from last year. And our faculty and staff participation is at an all-time high, up 13 percent from the previous fiscal year.

This is a wonderful addition to the latest chapter of our story, but our legacy is far from fully written. Every day, with each new gift, the story grows, and we take one more step toward the next great transformation of our university.

With your vision and continued support, we are well on our way, ready to soar the next 90 years.

Thank you for your generosity and dedication to our university, and please join us in making our great university better than ever.

Sincerely,



**Christopher J. Lambert, J.D.**  
*Senior Executive Director of Development*



# IMPACT

ANNUAL REPORT  
ON PHILANTHROPY

## SENIOR ADMINISTRATION

Senior Vice President for External Relations & Chief Marketing Officer/  
Publisher  
**Bill Hampton ('98, '00, DB)**

Senior Executive Director  
of Development  
**Christopher Lambert, J.D.**

Executive Director of Development  
**Steven Bobinsky**

Executive Director of Alumni Relations  
**Bill Thompson ('87, PC)**

## EDITORIAL

Senior Director of Corporate  
Communications  
**Anthony Brown**

Director of Alumni & Development  
Communications/Editor  
**Sara Withrow**

Assistant Director of Alumni  
& Development Communications  
**Melanie Stawicki Azam**

Communications Specialist  
**Alan Marcos Pinto Cesar**

## DEVELOPMENT SERVICES

Executive Director  
of Development Services  
**John Neff**

Director of Database Administration  
**Paula Kropp**

## LAYOUT & DESIGN

Director of Creative Services  
**Leslie Smith**

Art Director  
**Jonathon Metz**

Senior Graphic Designer  
**Melissa Woods**

**EMBRY-RIDDLE**  
Aeronautical University  
FLORIDA | ARIZONA | WORLDWIDE

Embry-Riddle Aeronautical University is a tax exempt, independent, nonprofit, nonsectarian, coeducational university. Nonprofit ID: 59-0936101.

© 2016 Embry-Riddle Aeronautical University. All rights reserved.

All contributions in cash, stock and other gifts-in-kind received between July 1, 2015, and June 30, 2016, are reflected in this report. Every effort has been made to ensure the accuracy of this report and the related online donor recognition lists at [givingto.erau.edu/donor-recognition](http://givingto.erau.edu/donor-recognition). Please accept our apologies for any errors or omissions. Contact the Office of Donor Relations at 386-226-6138; or email [uadonor@erau.edu](mailto:uadonor@erau.edu) with any corrections, questions or address changes.

## BOARD OF TRUSTEES

**Mr. John Amore ('73, DB)**  
*Chief Executive Officer*  
Global General Insurance  
Zurich Financial Services (Ret.)

**Mr. Kenneth Dufour ('85, '89, WW)**  
*President*  
Aviation Management Consulting

**Dr. Charles "Chuck" Duva**  
*President & Chief Executive Officer*  
DuvaSawko Inc.

**Mr. Jim Henderson (HonDoc '13)**  
*Chairman*  
& *Chief Executive Officer*  
AssuredPartners Inc.

**Mr. Mori Hosseini (HonDoc '13; '78, '79, '82, DB)**  
*Chairman*  
& *Chief Executive Officer*  
Interwest Construction Inc.

**Gen. Ronald E. Keys**  
*U.S. Air Force (Ret.)*  
*Principal*  
RK Solution Enterprises  
*Senior Advisor*  
Bipartisan Policy Center

**Mr. Joseph Martin ('74, DB)**  
*Office of the Chairman*  
& *Vice Chairman of the Board*  
Fairchild Semiconductor  
International (Ret.)

**Mr. David O'Maley**  
*Chairman Emeritus*  
Ohio National Financial  
Services Inc.

**Mr. Glenn S. Ritchey**  
*President & Chief Executive Officer*  
Jon Hall Automotive Group

**Mr. David Robertson**  
*Owner*  
Robertson Racing

**Mr. Jean G. Rosanvallon**  
*President & Chief Executive Officer*  
Dassault Falcon Jet

**Mr. Zane Rowe ('91, DB)**  
*Executive Vice President*  
& *Chief Financial Officer*  
VMware

**Mr. Jon Slangerup ('81, WW)**  
*Chairman & Chief Executive Officer*  
Mxi Technologies

**Ms. Nicole Stott ('87, DB)**  
*Astronaut*  
National Aeronautics  
& Space Administration (Ret.)

## TRUSTEES EMERITI

**Mr. Jay C. Adams Jr. (HonDoc '08)**  
*Executive Vice President*  
Brown & Brown (Ret.)

**Mr. Lawrence W. Clarkson**  
*President*  
Boeing Enterprises (Ret.)

**Mr. Philip H. Elliott Jr. (HonDoc '04; '72, DB)**  
*Attorney at Law*  
Philip H. Elliott, Jr., P.A.

**Mr. Harry Lamon**  
*Principal*  
Lamon & Sherman Consulting

**Mr. S. Harry Robertson (HonDoc '72)**  
*President & Chief Executive Officer*  
Robertson Research Group

## CONTACT THE OFFICE OF DEVELOPMENT

**Mr. Christopher Lambert, J.D.**  
*Senior Executive Director*  
[Christopher.Lambert@erau.edu](mailto:Christopher.Lambert@erau.edu)  
386-323-8827

**Mr. Steven Bobinsky**  
*Executive Director*  
[Steven.Bobinsky@erau.edu](mailto:Steven.Bobinsky@erau.edu)  
928-777-4210



600 S. CLYDE MORRIS BLVD. | DAYTONA BEACH, FL 32114-3900

**EMBRYRIDDLE**  
Aeronautical University



AN EVERLASTING LEGACY

[givingto.erau.edu](http://givingto.erau.edu)

---

